



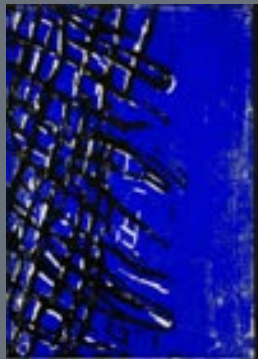
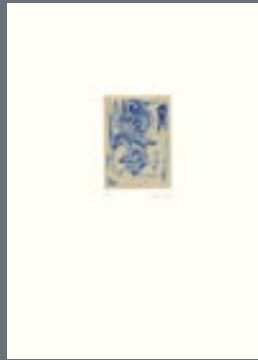
LULLIN+  
FERRARI

*Georg Baselitz*

Eagle, 1974

Limmatstrasse 214  
CH-8005 Zürich  
t. +41 (0)43 205 2607  
f. +41 (0)43 205 2608  
info@lullinferrari.com  
www.lullinferrari.com

# LULLIN + FERRARI



## GEORG BASELITZ

*Eagle*, 1974

Portfolio with 4 Etchings on rolled-on imitated japan paper on Rives handmade paper, 2 woodblock prints with line etching and 5 woodblock prints, 4 of them overworked by hand, woodblock prints on front and back sleeve  
Ed. 26/30

WVZ No. 170-181

LULLIN+  
FERRARI



**GEORG BASELITZ**

*Eagle*, 1974

Sleeve of the portfolio  
2 woodblock prints in blue  
and black on foamboard  
each 71 x 51 cm (28 x 20 in.)  
WVZ No. 170

# Adler

Georg Baselitz

Mappe mit 4 Radierungen auf aufgewalztem Packpapier auf Rieves Bütten,  
2 Holzstichen mit überarbeiteten Strichätzungen und 5 Holzschnitten,  
4 davon von Hand überarbeitet (und Holzschnitte auf dem Vorder- und Rückenteil  
des Umschlages), gedruckt Ende 1974 in einer Auflage von 5 römischen  
und 30 arabischen Exemplaren von Reinhard Spiegel, Wiesbaden (Radierungen),  
von Steinmetz, Forst an der Weinstraße (Holzstiche/Strichätzungen)  
und von Georg Baselitz (Holzschnitte), herausgegeben im Februar 1975 von der  
Edition der Galerie Heiner Friedrich GmbH,  
8 München 22, Maximilianstraße 15

**GEORG BASELITZ**

*Eagle, 1974*

Detail Colophon

70 x 50 cm (27-1/2 x 19-5/8 in.)



1974  
Baselitz

**GEORG BASELITZ**

Sheet 1 from the *Eagle* portfolio:

*Untitled*, 1974

Etching, aquatint and Drypoint on copper

Blue on rolled-on imitated japan paper, on Rives handmade paper

Plate: 13.7 x 10.1 cm

Paper: 70 x 50 cm

Ed. 26/30

WVZ No. 171



**GEORG BASELITZ**

Sheet 2 from the *Eagle* portfolio:

*Untitled*, 1974

Etching on copper

Blue on rolled-on imitated japan paper, on Rives handmade paper

Plate: 33 x 24.6 cm

Paper: 70 x 50 cm

Ed. 26/30

WVZ No. 172



WVZ  
Baselitz

**GEORG BASELITZ**

Sheet 3 from the *Eagle* portfolio:

*Untitled*, 1974

Etching and drypoint on copper

Blue on rolled-on imitated japan paper, on Rives handmade paper

Plate: 18.6 x 13.5 cm

Paper: 70 x 50 cm

Ed. 26/30

WVZ No. 173



**GEORG BASELITZ**

Sheet 4 from the *Eagle* portfolio:

*Untitled*, 1974

Etching and drypoint on copper

Blue on rolled-on imitated japan paper, on Rives handmade paper

Plate: 33 x 24.8 cm

Paper: 70 x 50 cm

Ed. 26/30

WVZ No. 174



**GEORG BASELITZ**

Sheet 5 from the *Eagle* portfolio:

*Untitled*, 1974

Woodblock print and etching, 2 plates

Woodblock printed in blue and overworked, black etching  
on white imitated japan paper: 28.4 x 18.5 cm, mounted on photo board

Plates: 26.5 x 16.8 cm

Paper: 70 x 50 cm

Ed. 26/30

WVZ No. 175



**GEORG BASELITZ**

Sheet 6 from the *Eagle* portfolio:

*Untitled*, 1974

Woodblock print and fingerpainting

Woodblock printed in blue, overpainted in red

on white imitated japan paper: 28.4 x 18.5 cm, mounted on photo board

Plates: 26.5 x 16.8 cm

Paper: 70 x 50 cm

Ed. 26/30

WVZ No. 176



**GEORG BASELITZ**

Sheet 7 from the *Eagle* portfolio:

*Untitled*, 1974

Woodblock print and etching, 2 plates

Woodblock printed in blue and overworked, black etching  
on white Ingres paper: 28.4 x 18.5 cm, mounted on photo board

Plates: 26.5 x 16.8 cm

Paper: 70 x 50 cm

Ed. 26/30

WVZ No. 177



**GEORG BASELITZ**

Sheet 8 from the *Eagle* portfolio:

*Untitled*, 1974

Woodblock print and finger paint

Woodblock printed in blue, overpainted in blue

on white imitated japan paper: 28.4 x 18.5 cm, mounted on photo board

Plates: 26.5 x 16.8 cm

Paper: 70 x 50 cm

Ed. 26/30

WVZ No. 178



**GEORG BASELITZ**

Sheet 9 from the *Eagle* portfolio:

*Untitled*, 1974

Woodblock print overpainted

Woodblock printed in blue and red, overpainted in blue and red  
on white imitated japan paper: 28.7 x 18.6 cm, mounted on photo board

Plates: 26.5 x 16.8 cm

Paper: 70 x 50 cm

Ed. 26/30

WVZ No. 179



**GEORG BASELITZ**

Sheet 10 from the *Eagle* portfolio:

*Untitled*, 1974

Woodblock print and etching, 2 Plates

Woodblock printed in blue and overworked, black etching  
on white Ingres paper: 28.4 x 18.5 cm, mounted on photo board

Plates: 26.5 x 16.8 cm

Paper: 70 x 50 cm

Ed. 26/30

WVZ No. 180



**GEORG BASELITZ**

Sheet 11 from the *Eagle* portfolio:

*Untitled*, 1974

Woodblock print overpainted

Woodblock printed in blue, overpainted in red  
on white paper: 44.8 x 34.7 cm, mounted on photo board

Plate: 43.7 x 34.7 cm

Paper: 70 x 50 cm

Ed. 26/30

WVZ No. 181

**LULLIN +  
FERRARI**

*Inventory*

works available by Georg Baselitz, Gillian Carnegie, Franz Gertsch,  
Richard Hamilton, Damien Hirst, Gary Hume, Anish Kapoor,  
Guillermo Kuitca, Urs Lüthi/David Weiss, Chris Ofili,  
Markus Raetz, Dieter Roth, Frank Stella, James Turrell a.o.

September 2008

All rights reserved.

For availability and inquiries please contact the gallery:

**Lullin + Ferrari**

Limmatstrasse 214

CH-8005 Zürich

t. +41 (0)43 205 2607

f. +41 (0)43 205 2608

info@lullinferrari.com

www.lullinferrari.com